

TABS WCNVASCV Export for ADD4PC Using User Defined Export Format

First Time Setup

To initially configure the ADD4PC Data Collection Program for interfacing with the WCNVASCV or TBDevice Variable interface program from Software Technologies, TABSIII Time and Billing Program follow the setup procedure below.

Select SETUP|User Defined Export Format.

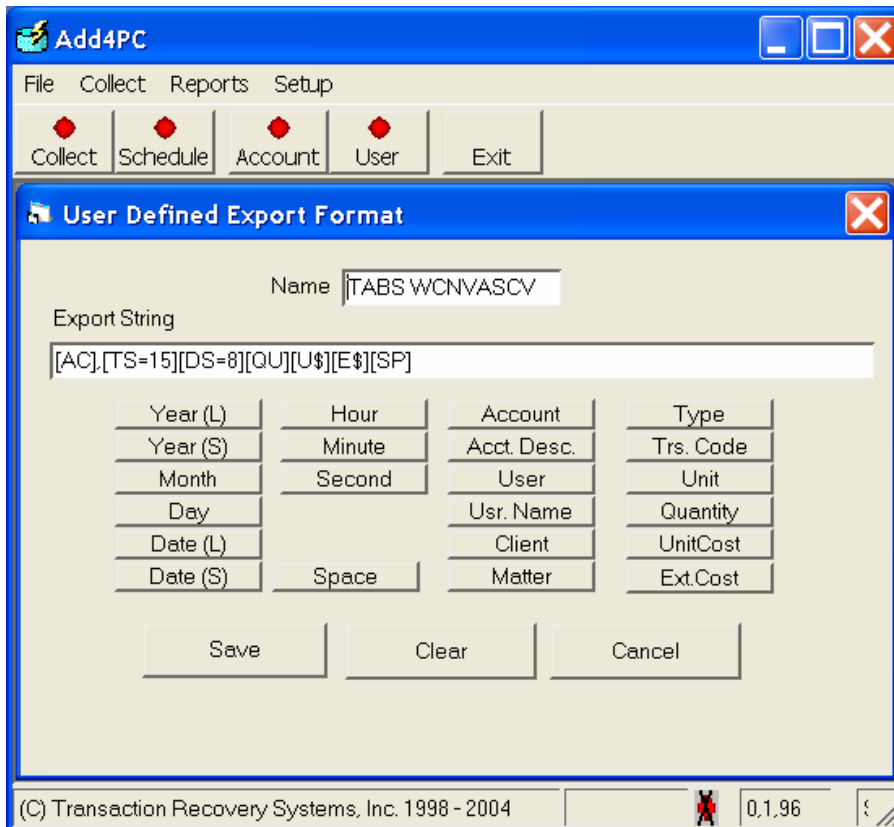
Create the following Export String:

```
[AC],[TS=15][DS=8][QU][U$][E$][SP]
```

Click Save.

Note: the export string can be created by clicking - in the following order - the Account, TrsCode, Date(S) Quantity, Unit Cost, Ext.Cost and Space buttons and then inserting the applicable special characters to complete the string. Click Save.

Close the User Defined Export Dialog box.



Transaction Recovery Systems, Inc.

Next, select FILE|Export|My Export (or whatever name you gave the export).

Click Settings.

In the boxes labeled Transaction Code, enter the following string for each category (Copies, postage, etc.)

,\$XX,LXXX,EXXX,

(where \$ XX is the corresponding Transaction Code in TABIII for the category, LXXX is the Task/Phase code in TABSIII for the category and EXXX represents the Activity code in TABSIII for the Task Code for the category)

For example:

Copies = ,\$51,L100,E101,
Postage = ,\$53,L100,E108,
Fax = ,\$55,L100,E104,

Make sure all Transaction Code boxes have applicable codes set up prior to using the MyExport option.

After completing all applicable Transaction Code boxes, click Save.

Exporting Data for the TABSIII WCNVASCV program

After collecting ADD-4 data, select FILE|Export|My Export.

Enter the desired date range and click Export.

Under Save in: enter directory where TABSIII resides. For example: F:\STI

Under File name: enter TABS3.ASC.

Click Save.

After the export conversion takes place, a dialog box stating "Add4PC has successfully exported X records to F:\STI\TABS3.ASC" (where directory names as those specified in Save in: option above). Click OK.

Run the WCNVASCV Program from Software Technologies.

Then open the TABS Time & Billing Program and click **INTEGRATION|Merge TABSIII Remote Data**.

TABS WCNVASCV Export Using User Defined Export Format

Notes:

After running the WCNVASCV program , the next step is INTEGRATION|Merge TABSIII Remote Data and **not** Merge Data Capture Trans, like with Convascf.

The client may have task based clients and non-task based clients in database. This ok, since the MyExport file looks like this:

```
[AC][TS][DS=8],[E$],,
```

and the [TS] includes the Transaction code as well as the Task codes

The [TS] box in SET|UserDefined Setup|Settings are set up like this:

```
Copies = , $ 51,L100,E101,  
Postage = , $ 53,L100,E108,  
Fax = , $ 55,L100,E104,
```

Where, in the first line of the example, 51 is the Transaction Code for copies, L100 is the general Task/Phase code in TABS and E101 represents the Expense(Activity Code) code for task based billings.

If the client is set up as *task based or non-task based and the MyExport* uses the WCNVASCV layout, then the TABS program looks at the Task Code list and uses the description attached to the Activity portion of the Task Code list. For example E101's description is just "Copying". This is noted because we do not provide a description in MyExport.

These files are much like the .rem files of the original CONVASCf program:

```
Rmtfee.dat  
Rmtcost.dat  
Rmttrans.dat  
Rmttrans.idx
```

The WCNVASCV layout gives detailed records only, there is no option to import cost totals only, like in the Convascf Program.