

TABS TBDevice Variable Export for ADD4PC Using User Defined Export Format

First Time Setup

To initially configure the ADD4PC Data Collection Program for interfacing with the TBDevice Variable interface program from Software Technologies, TABSIII Time and Billing Program follow the setup procedure below.

Select SETUP|User Defined Export Format.

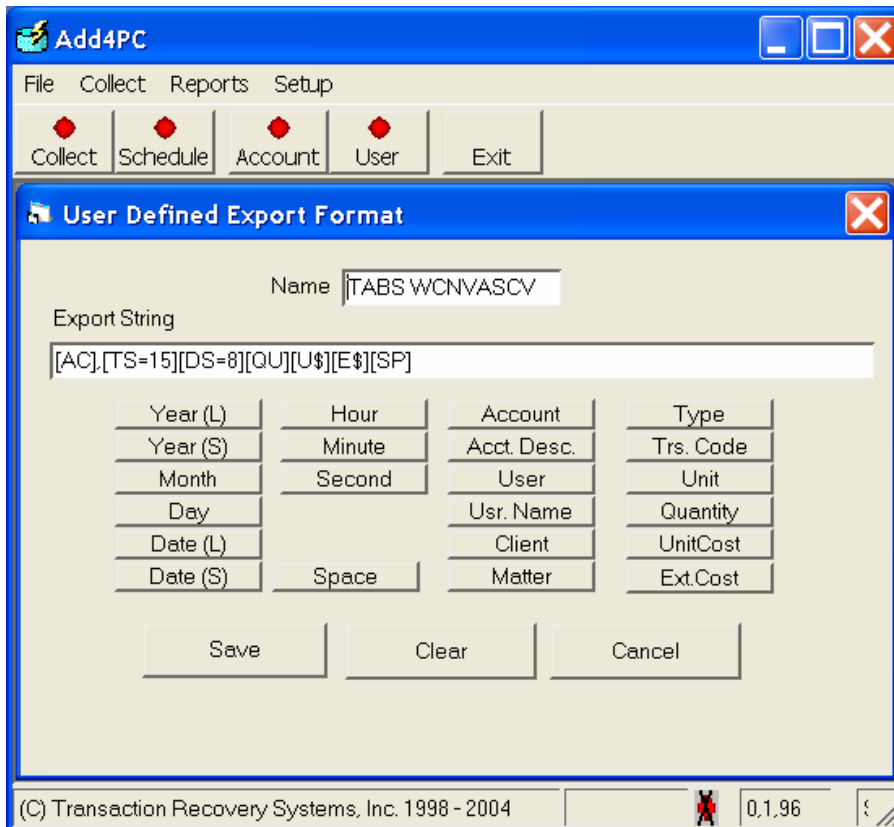
Create the following Export String:

```
[AC],[TS=15][DS=8][QU][U$][E$][SP]
```

Click Save.

Note: the export string can be created by clicking - in the following order - the Account, TrsCode, Date(S) Quantity, Unit Cost, Ext.Cost and Space buttons and then inserting the applicable special characters to complete the string. Click Save.

Close the User Defined Export Dialog box.



Transaction Recovery Systems, Inc.

Next, select FILE|Export|My Export (or whatever name you gave the export).

Click Settings.

In the boxes labeled Transaction Code, enter the following string for each category (Copies, postage, etc.)

,\$XX,LXXX,EXXX,

(where \$ XX is the corresponding Transaction Code in TABIII for the category, LXXX is the Task/Phase code in TABSIII for the category and EXXX represents the Activity code in TABSIII for the Task Code for the category)

For example:

Copies = ,\$51,L100,E101,
Postage = ,\$53,L100,E108,
Fax = ,\$55,L100,E104,

Make sure all Transaction Code boxes have applicable codes set up prior to using the MyExport option.

After completing all applicable Transaction Code boxes, click Save.

Exporting Data for the TABSIII TBDevice Variable program

After collecting ADD-4 data, select FILE|Export|My Export.

Enter the desired date range and click Export.

Under Save in: enter directory where TABSIII resides. For example: F:\STI

Under File name: enter TABS3.CV.

Click Save.

After the export conversion takes place, a dialog box stating "Add4PC has successfully exported X records to F:\STI\TABS3.CV" (where directory names as those specified in Save in: option above). Click OK.

Run the TBDevice Variable Program from Software Technologies.

Then open the TABS Time & Billing Program and click **INTEGRATION|Merge TABSIII Remote Data**.