

Transaction Recovery Systems, Inc.

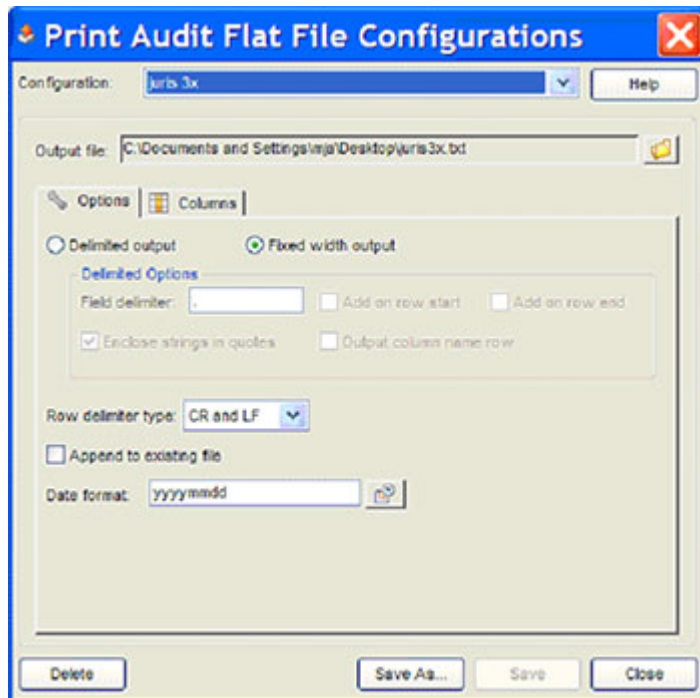
Copy Audit Export Configuration for Juris 3X format

Configure the CopyAudit Program to export records to Juris Time and Billing for importing into client bills.

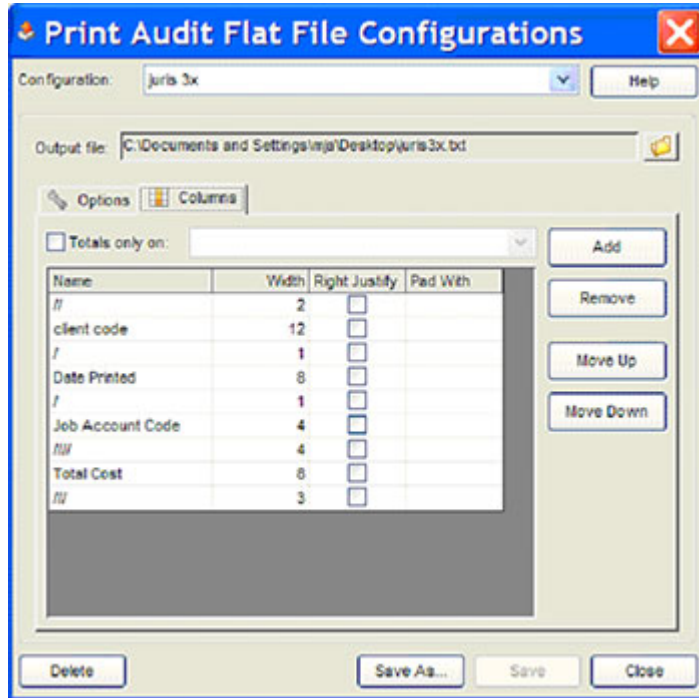
To create the Juris export configuration, go to Print Audit 5|Reports|Job Manager|Tools|Export Results|Configurations. Create the screens below and save the configuration.

The Juris 3.x file format is the legacy format used by all versions of Juris. For Juris Next Generation, the resultant file name must have an .ESB extension. For example, "Copies.esb".

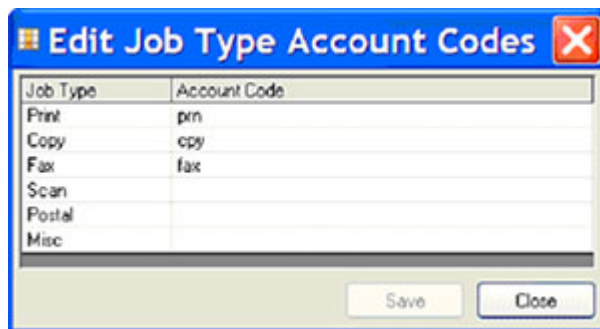
To create the actual export file for Juris, go to Print Audit 5| Reports|Job Manager|Accounting|Run Accounting.



Transaction Recovery Systems, Inc.



To configure the Job Account Code, select Accounting|Edit Job Type Account Codes. Enter the applicable expense codes from Juris in the Expense Code column.



The above configuration will generate an export file that contains detailed records in this format:

```
//Client code /Date Printed(yyyymmdd)/Expense code ////Total cost ///
```

The Expense Code is generated from the Job Type Accounting Code set-up.

That looks like this:

```
//333/12345 /20061104/cpy ////0.99 ///
```

```
//333/33333 /20061101/cpy ////2.10 ///
```

```
//330/12343 /20061031/fax ////0.90 ///
```

```
//333/000 /20061031/cpy ////1.50 ///
```

The fields exported from CopyAudit are:

Transaction Recovery Systems, Inc.

```
//  
Client code  
/  
Date printed (yyyymmdd)  
/  
Job Account Code  
////  
Total cost  
///
```

To import the file created into Juris, use the Juris Import feature.

Note:

1. Juris is set up to allow for spaces.
2. In the records above, "Job Account Code" represents the expense code in Juris.
3. The Copy Audit device must be configured with a forward slash as the delimiter - "/" – between the client and matter code. If the delimiter is a dash, you will need to run the export file through an editor to replace the (-) dash with a (/) slash prior to importing into Juris.
4. If the multiplier in Juris for the expense code is other than "1", use Total units rather than Total Cost in the export configuration set up.
5. Please note there are other export strings that can be created for the Juris 3x format to include additional information such as Task codes. Consult your CopyAudit Representative for more details.

The fields expected by Juris for the 3.X format are:

Field name	Optional/required	Format
Operator ID	Optional	4 character alphanumeric
Client Code	Required	6 character alphanumeric
Matter Code	Required	5 digit numeric
Transaction Date	Required	8 digit numeric (yyyymmdd)
Expense Code	Required	4 character alphanumeric
Summary Flag	Optional	4 character alphanumeric
Timekeeper	Optional	4 character alphanumeric
Task Code	Optional	4 character alphanumeric
Expense Amount *	Required	8 digit numeric (99999.99)
Description **	Optional	Up to 100 lines of 50 characters each

* The expense amount field may contain the transaction cost OR number of copies made. The Customer specifies this when assigning the expense code in Juris. The expense code is also given a "multiplier" in Juris. Therefore, if the computed cost of the transaction is given in this field, the multiplier in Juris should be "1".

Transaction Recovery Systems, Inc.

If the number of copies is given, rather than the computed total, the multiplier in Juris should be the cost per copy. If Juris is using "schedulers" for expense codes, the number of copies should be used, as the multiplier in Juris under schedulers can be different for different clients using the same expense code.

** Any descriptions from the imported records will take precedent over any descriptions in the Juris expense code table.