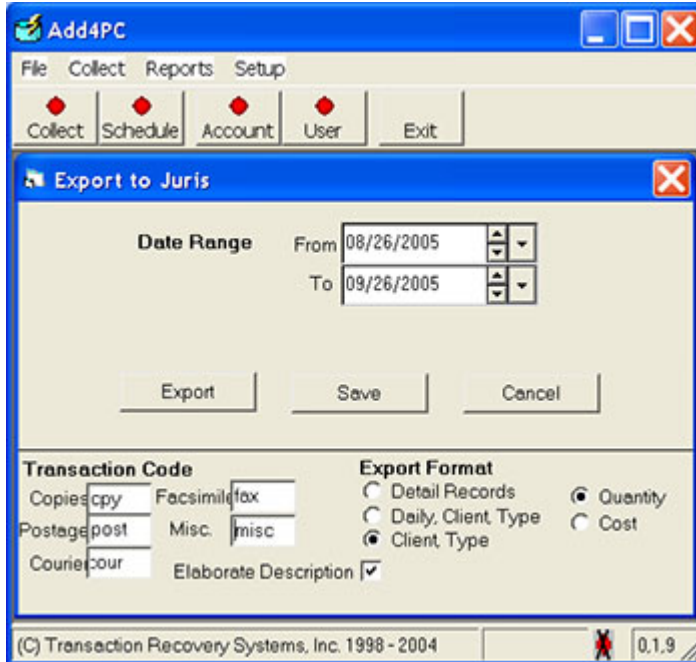


Transaction Recovery Systems, Inc.

Juris Time & Billing File Export Option for ADD4PC

Data collected from the ADD-4 Copier Control unit(s) can be formatted for importing into the Juris Classic and Next Generation versions of Juris.

There are 3 options in total for producing a file that will interface with the Juris Time and Billing program using the External Batch Entries or Import feature.



(1) Juris Detail Records Export Option

The Juris export file is a delimited format as shown below. Please contact TRS, Inc for specifics on field lengths. The general configuration (left to right) is //Client/Matter/Date (YYYYDDMM)/Transaction Code/// Amount (in copier transactions - number of copies **or** calculated amounts; in non-copier transactions – calculated totals only)///.

- Data is presented in detailed form - one transaction per line.
- The Transaction Code is customer configured.
- **In the case of copies, the customer can select whether to present the number of copies or a calculated amount** (see Export to Juris settings in the ADD4PC Data Collection Program).
- **In non-copier transactions, a calculated amount is presented only**

```
//123/123/20061217/20///5///  
//123/123/20061217/24///3.00///  
//123/123/20061217/22///0.96///
```

Transaction Recovery Systems, Inc.

//12345/111/20061217/20///5///
//123/123/20061218/20///5///
//1234/123/20061218/20///5///
//1234/145/20061218/22///0.99///
//12345/123/20061218/20///4///
//12345/123/20061218/22///1.08///

(2) Juris Daily, Client, Type Export Option

The Juris export file is a delimited format as shown below. Please contact TRS, Inc for specifics on field lengths. The general configuration (left to right) is //Client/Matter/Date (YYYYDDMM)/Transaction Code/// Amount (in copier transactions - number of copies **or** calculated amounts; in non-copier transactions – calculated totals only)///.

- Data is summarized by Client by date (daily).
- The Transaction Code is customer configured.
- **In the case of copies, the customer can select whether to present the number of copies or a calculated amount** (see Export to Juris settings in the ADD4PC Data Collection Program).
- **In non-copier transactions, a calculated amount is presented only**

//123/123/20061217/20///5///
//123/123/20061217/24///3.00///
//123/123/20061217/22///0.96///
//12345/111/20061217/20///5///
//123/123/20061218/20///5///
//1234/123/20061218/20///5///
//1234/145/20061218/22///0.99///
//12345/123/20061218/20///4///
//12345/123/20061218/22///1.08///

(3) Juris Client, Type Export Option

The Juris export file is a delimited format as shown below. Please contact TRS, Inc for specifics on field lengths. The general configuration (left to right) is //Client/Matter/Date (YYYYDDMM)/Transaction Code/// Amount (in copier transactions - number of copies **or** calculated amounts; in non-copier transactions – calculated totals only)///.

- Data is summarized by Account Code.
- The date is the date of the collection.
- The Transaction Code is customer configured.
- **In the case of copies, the customer can select whether to present the number of copies or a calculated amount** (see Export to Juris settings in the ADD4PC Data Collection Program).
- **In non-copier transactions, a calculated amount is presented only**

Transaction Recovery Systems, Inc.

//123/123/20061218/20///10///
//123/123/20061218/24///3.00///
//123/123/20061218/22///0.96///
//1234/123/20061218/20///5///
//1234/145/20061218/22///0.99///
//12345/111/20061218/20///5///
//12345/123/20061218/20///4///
//12345/123/20061218/22///1.08///

Importing ADD4 data into Juris:

After collecting ADD-4 data, select FILE|Export|Juris

Specify the date range desired.

On first use, select SETTINGS. Enter the Juris expense codes for copies, fax, postage, courier and miscellaneous items. Make sure to put an expense code in each transaction code box, even if these items will not be used on the ADD-4 unit. Select the Detail Records option under Export Format. Click SAVE.

Click the EXPORT button.

The Export to Juris box opens.

Select the desired directory to save the data in for the Save in: drop down box.

In the File name: box, enter a filename (In Next Generation, the extension must be .ESB)

Click SAVE.

After the export conversion takes place, a message box stating "Add4PC has successfully exported X records to C:\Directory A\DirectoryB\Filename" (where directory and filename names are those specified in Save in: option above).

Click OK.

Close or minimize the ADD4PCWin Program.

Go into Juris and select Transactions|Expense Entries|Tools|Import.

If prompted to specify whether this is a 3.X format, respond Yes.

Specify the filename (complete path) to import. For example: C:\Copies\Filename.esb