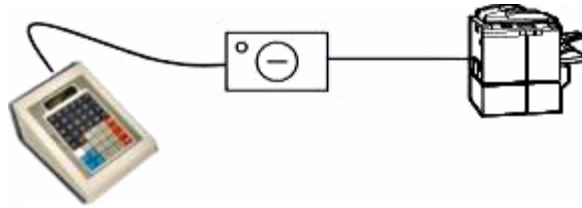


Transaction Recovery Systems, Inc.

ADD SYSTEM KEYSWITCH INSTALLATION



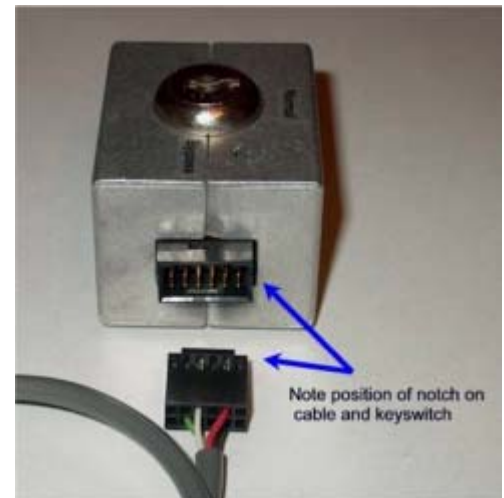
Attach the ADD-4 Keyswitch Module Cable to the side of the keyswitch with the copy pulse LED.

Attach the copier cable to the side of the Keyswitch module opposite the copy pulse LED.

When plugging the copier cables into the Keyswitch Module, note the orientation of the notch on the cable ends, per Figure 1.

Incorrectly connected cables may result in bent pins and equipment malfunction.

Figure 1



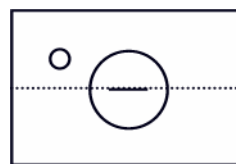
Testing after Installation

Once all cables are connected and the ADD-4 power supply is plugged in, turn the key to the bypass position. Make a copy and ensure that the copy pulse LED flashes. In the bypass mode the copier should allow copies without requiring use of the ADD System.

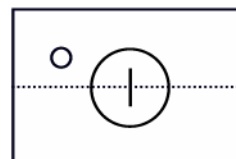
Next, turn the key to the normal position. The copier should now require use of the ADD System to make copies. Enter the applicable client and/or user codes and touch the Enter key

The Keyswitch Module relay will "click" and the copier is enabled. All copies made should be recorded on the ADD System display, while the Keyswitch Module's LED flashes with each copy pulse.

Touch the Cancel key to return the ADD System to the "idle" mode.



Bypass



Normal

Should you have any questions regarding this procedure, please contact TRS, Inc. at (800) 346-3182