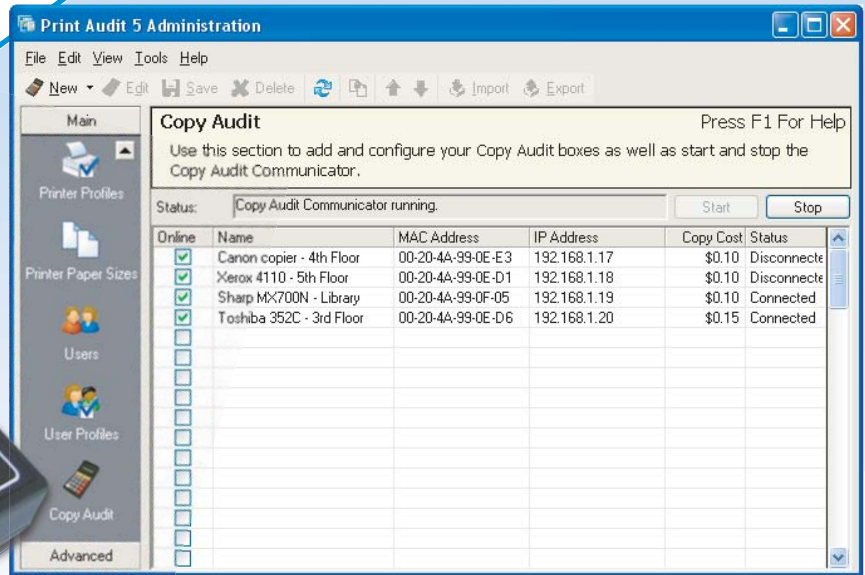


**Copy Audit** is the perfect solution for any firm interested in photocopy cost recovery.

Extensive reporting capabilities and time and billing integration saves time and money.

**Copy Audit's** seamless integration with **Print Audit**, provides a complete solution for document tracking and cost recovery.



## BENEFITS

- \* Easy, centralized configuration of multiple Copy Audit units.
- \* Full validation of an unlimited number of Client and User codes.
- \* TCP/IP network protocol.
- \* Comprehensive reporting tools.
- \* Configurable export formats for interfacing with most Time & Billing programs.

## FEATURES

- \* Configurable cost per copy.
- \* Large, full-travel numeric keypad.
- \* Memory back-up ensures transactions are retained even during network outages.
- \* Configurable hold and walk-away time-outs.
- \* Compatible with all 32-bit Windows Operating Systems.
- \* Compact design - 7.5" x 4" x 3"
- \* Special function keys for recording postage costs and fax pages.

# COPY AUDIT

Copy Tracking & Cost Recovery

www.transactionrecovery.com

Economical \* Simple \* Accurate

## Copy Audit

integrates with these and other Time and Billing programs:



## Hardware Features

- \* Up to **5 configurable entry prompts** allow the Copy Audit device to prompt for user, client, color copying or any other variable you wish to track.
- \* **Complete security** with unlimited user and/or client validation codes reduces entry errors, ensuring more accurate client chargeback.
- \* **Leverage your existing network** as no dedicated server is required. Simply connect the Copy Audit device to your LAN, assign an IP address and start tracking copier usage.
- \* **Configurable hold and walk-away time-outs** allow for customized settings for each copier or MFP device.
- \* **Compact design** - Dimensions 7.5" x 4" x 3"; weight 1.5 lbs.; 2 x 16 LCD display.
- \* **Special function keys** for recording postage costs and fax pages.

## Software Features

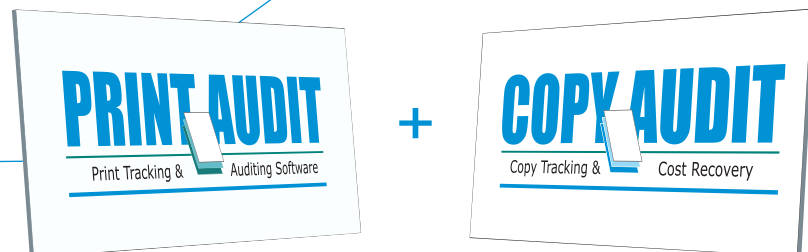
- \* **Variable pricing per page** by client code or specific copier or MFP - even color copies can be computed at a higher rate.
- \* **Schedule Time & Billing exports** to run daily, weekly or monthly - you decide.
- \* **Customizable export configurations** to accommodate most Time and Billing integration formats.
- \* **Create your own reports** in the customizable Job Manager. Select the data that is meaningful to your firm.

For more information, call:

**800-346-3182**

visit our website at:

[www.transactionrecovery.com](http://www.transactionrecovery.com)



Combine **Copy Audit** with **Print Audit** to track and report on both printing and photocopying - from the same interface!